



Network Management System

**MANAGEMENT**

MANAGE YOUR WEBSITE STREAMING

**CONTROL**

TOTAL REMOTE CONTROL OF YOUR EQUIPMENT

**MONITORING**

COMPLETE REPORTS AND CUSTOM DASHBOARD



WINDOWS ANDROID iOS



24-hour monitoring and control



You are in control anywhere in the world

HORUS NMS is the complete Remote Control and Management Software, developed by TSDA, for use in telemetry and control systems in equipment networks. Being developed with the most modern technology in the field of telemetry, Horus NMS brings together all flexibility, reliability and ease of operation in a single product, making it the ideal and essential tool for monitoring critical systems efficiently and reliably.

Its highly intuitive graphic interface allows the simplification of management and control tasks, adding professional management to the entire operation of the monitoring network, with a customized interface according to the visual identify of each client.

**Features**

- ▶ Management, monitoring and control of any equipment globally;
- ▶ Alerts via email, SMS and PUSH Notifications;
- ▶ Full reports and custom dashboards;
- ▶ Reduction in operating costs;
- ▶ Intuitive and easy to use, configure and operate;
- ▶ Complete telemetry and remote control system on mobile devices.

## Modules

---

Viewer



APP

Visual Studio



Report Manager

Connection Manager



Server



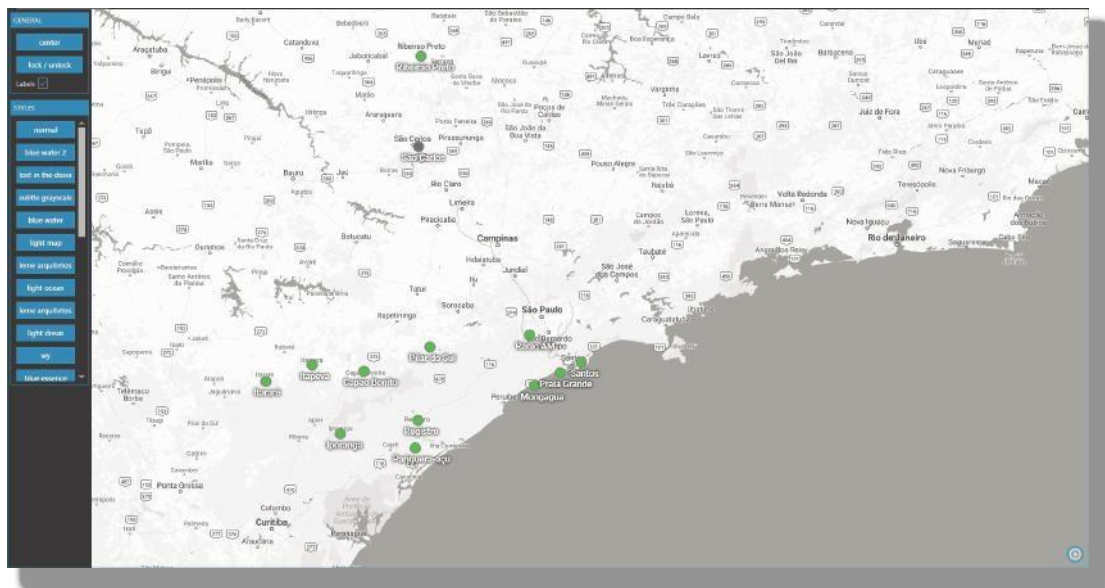
HORUS<sup>NMS</sup>

Alerts: Visual and Sound

Sensors: Monitored in real time



Monitoring, management and total remote control of your equipment with fully customizable dashboards.



Equipment mapping anywhere in the world



## Monitoring

Powerful tool for analysis and presentation, ensuring total monitoring of equipment at your transmission site in a completely remote way. Quick cause and effect analysis helping with repair. It has complete reports, personalized dashboards and real-time alerts.



## Management

Management of different types of elements and networks, providing management of SNMP devices from any manufacturer. Offers easy integration with MIB files, without the need for specific knowledge or additional cost. Acquisition, verification and visualization of current and past alarms.



## Control

Control any device completely remotely, increasing operational efficiency and decreasing the number of visits to the transmission site.

## Minimum Requirements



Processor	Intel Core I5 @2,5GHz (minimum) Intel Core I7 @ 4GHz (from 100 devices)	Intel Core I5 (minimum)
RAM Memory	4 [GB] (minimum) 8 [GB] (from 100 devices)	4 [GB] (minimum)
Hard Drive	500 [GB] (minimum) Variation according to the use of logger and data logger resources	
Operational System	Windows Server*, 7, 8 or 10	Windows 7, 8 or 10
Framework	DotNet 4.6.1	
SMS Notification	Optional modem for sending SMS	
Database	MySQL (check version)	

## Viewer



- General system view and operation;
- Visualization of alarms and operational status;
- Activation of remote controls with access levels;
- Possibility of multiple screens and maps;
- Histogram in real time.



## Report Manager



- Dedicated module for generating reports statistics and graphs;
- Customization of management reports (templates);
- Automatic generation and sending of reports;
- User action report (“audit trail”).



## Visual Studio



- Complete creation of screens/ dashboards;
- Intuitive graphical interface;
- Use of various graphic resources such as different displays, links to other screens, camera images and links equipment pages;
- Choose and manage maps and profile icons.



## Server



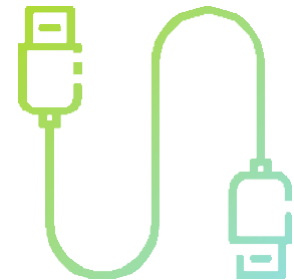
- SERVER;
- User license control;
- General registration of users, profiles and equipment;
- TRAP's category configuration;
- Database maintenance routines;
- Configuration of parameters for sending XML via FTP;
- Communication with clients via HTTP Request (Web services);
- System-wide DEBUG interface.



## Connection Manager



- Graphic visualization of connectivity of the monitored devices;
- Connection quality charts;
- Graphic and statistical connectivity reports.



## APP



- Real-time monitoring of system information and mobile alarm reception via "PUSH".

